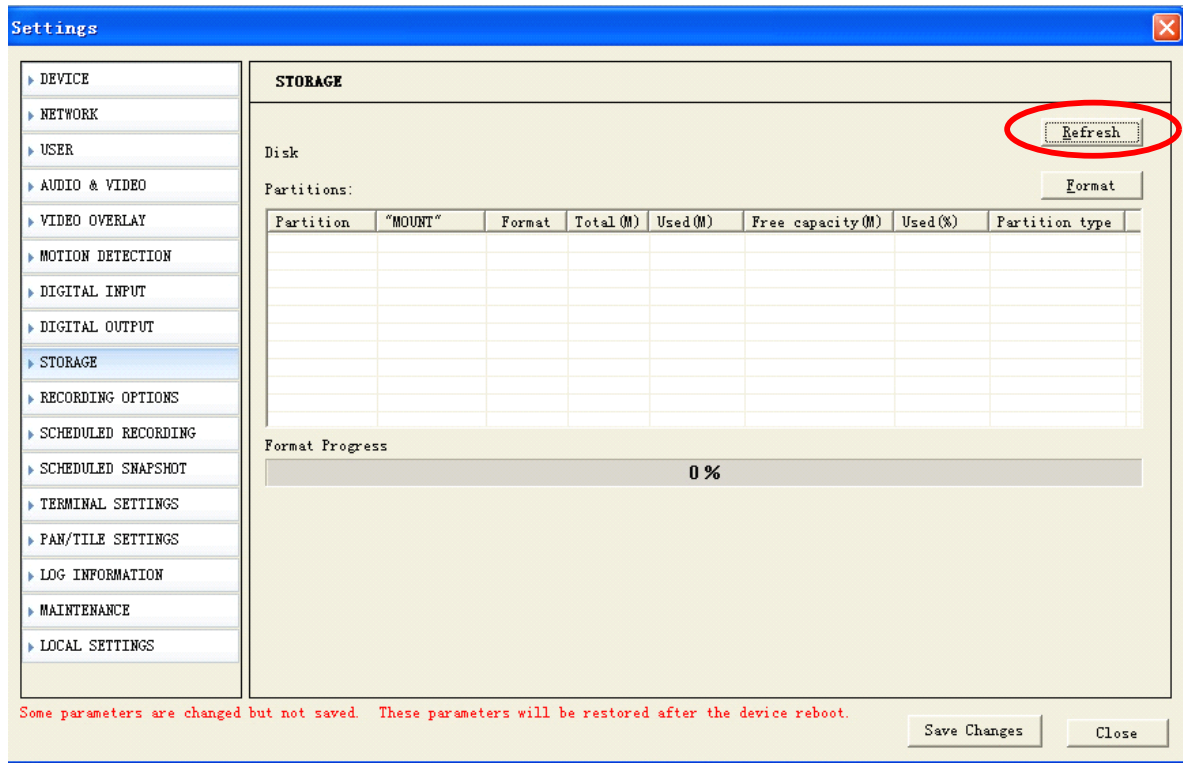


How to format the SD card?

After log in IP camera over IE, click "setup"--"Storage",
It pops up the following dialog



Step 1: Click "Refresh" button, the dialog shows the following info.

Partitions:

Partition	"MOUNT"	Format	Tota...	Used (M)	Free capacit...	Used (%)	Partition type
0	Yes	Yes	1924	0	1924	0	Data partition

Step 2: Select it, click "Format" button

Step 3. After you click Format, it pops up a dialogue "Are you sure to format to format the Disk". Click "OK" to format it.

After successes format, it shows information as follows:

