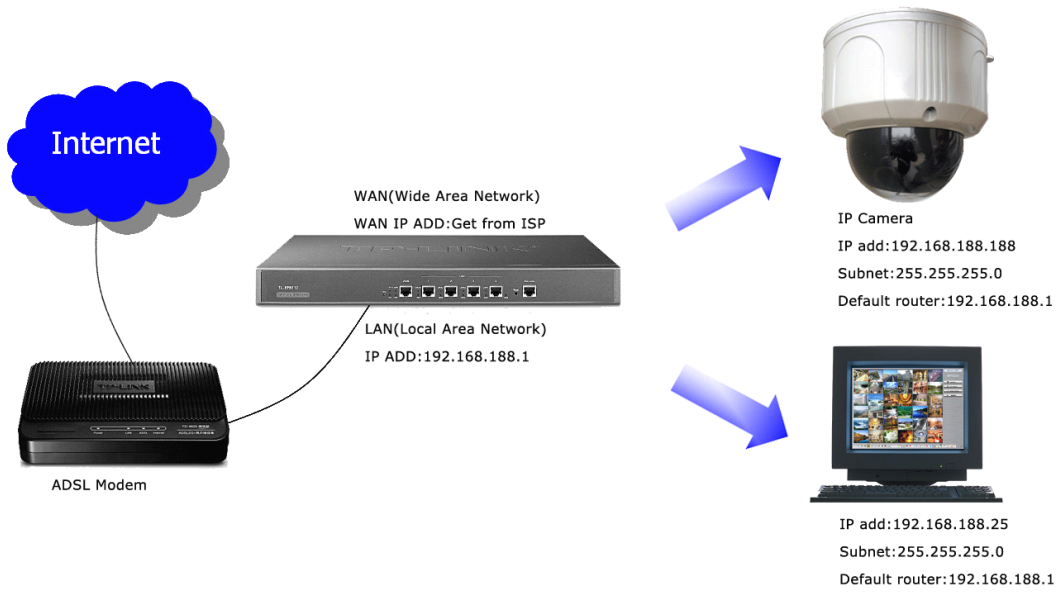


How to view the video over CMS



	IP address	Port
IP Camera	192.168.188.190	Web port: 81 Data port:9900
Router	192.168.188.1	Forward the 80, 9500 in the router
Remote PC	192.168.188.25	

Setting on CMS (The CMS.exe is in the CD, Please install CMS in Computer)

- 1) After install the CMS, click Start—Program—CMS-CMS
- 2) Default user name of CMS is admin, password is null (no password).

2 Log in CMS, click  Group settings at bottom-right GUI, it pops up the following dialog.

1) Add Group

The image shows two screenshots of the 'Group Settings' dialog box in CMS. The left screenshot shows the 'Add' button circled in red with the text 'Right click mouse to add Group.' The right screenshot shows the 'Default group name is Group001. You can define it.' text circled in red.

Group Settings

Properties

Device Name

Reverse connect

Device URL

Device Port

CH Count

DI Count

DO Count

User Name

Password

Notice: Please add one group at lease!!!

OK Cancel Add

Default group name is Group001. You can define it.

2) Add IP cameras.

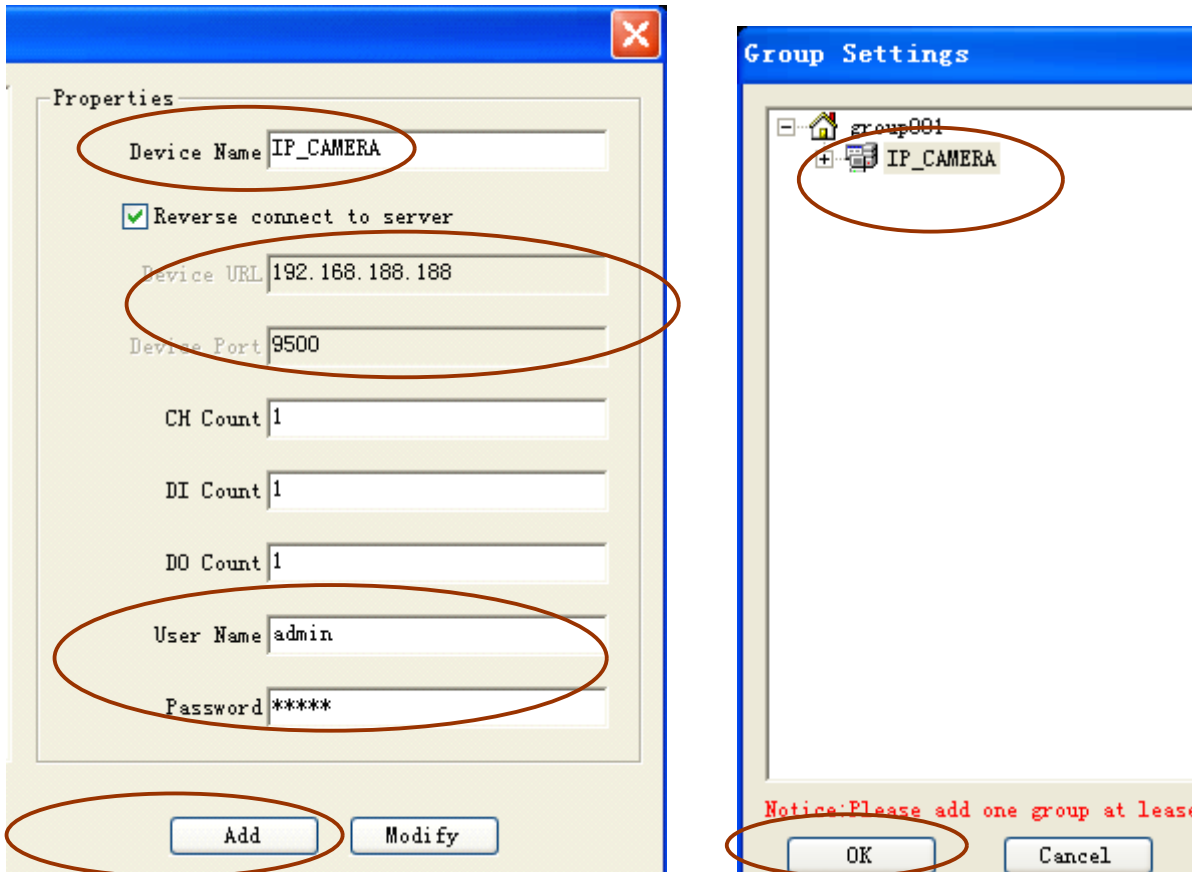
Step1: Input device name, any text is ok. E.g. Door or demo.

Step2: Input the **Internet IP address**, 183.37.125.210

Step3: Input the port, 9900

Step4: Input user name and password "guest"

Step5: click "Add" to add IP cameras in the groups.



3) Connect video

Right Click "IP Camera" to select "log on" to connect IP Camera. Click "camera 01" to select "connect image"

CMS

Current Recording
Free Space:
Free Space %:
Current Page: Home Page

- group001
 - IP_CAMERA (192.168.188.188:9555)
 - camera01

The right side of the interface features three vertically stacked video preview windows. Each window is currently black, indicating that no video feed is being received. Below each window is a status bar with a red stop icon, a play icon, a refresh icon, and the text 'not assign'.